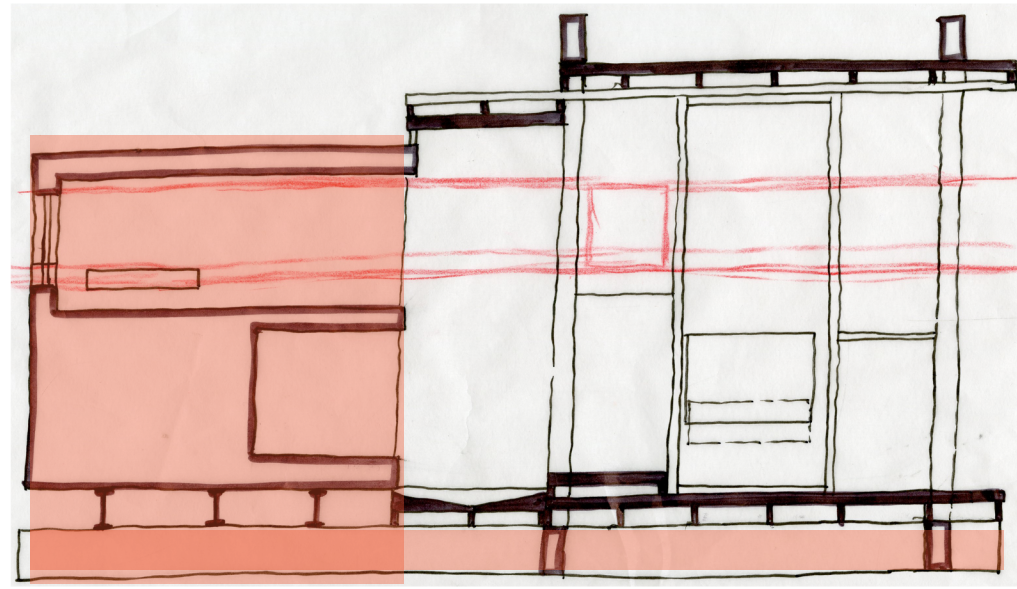
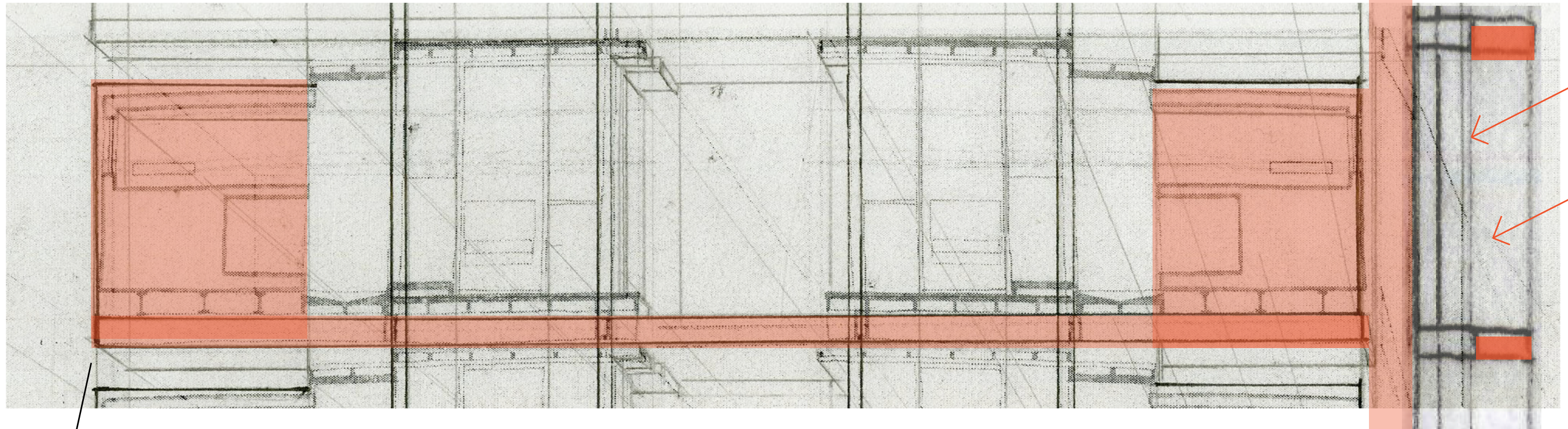


Solar panels absorb sunlight

Heat Storage/Transmission



Ability to close glazed panels in winter allows sunlight to warm heavy concrete mass (thermal massing) while blocking cold winds coming from the south.



Heavy concrete base acts as thermal mass, absorbing heat. Additional mechanisms to disperse heat through the floors. Occupants act as vectors, drawing heat up through their bodies.

Air pocket that forms between closed front skin acts as insulation in the winter. Heat collects as the skin and the thermal massings of the concrete POD sleep areas absorb sunlight. Stack effect draws some of this heat upwards.